



Cardiovascular Health

Coronary Calcium Scan

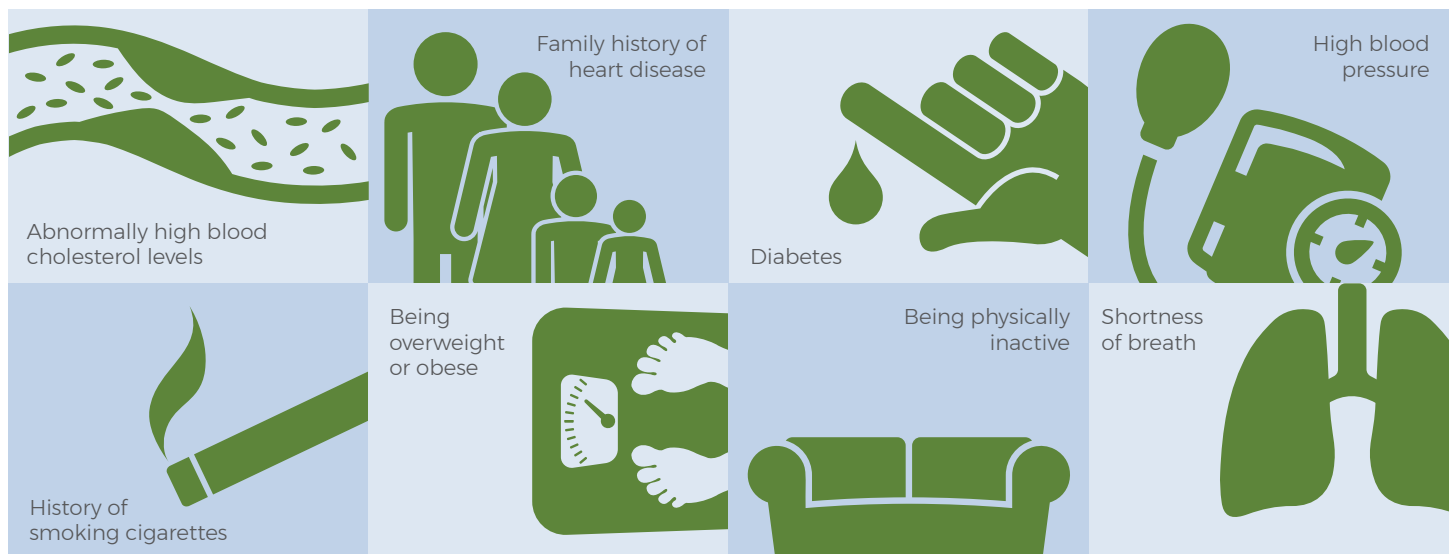
Heart disease is the number one killer of Americans. About 659,000 people in the U.S. die from heart disease each year.

Most people don't know they have heart disease until they have a heart attack or stroke. However, a low dose CT computerized tomography (CT) calcium scoring scan can identify the early stages of heart disease in patients without symptoms.

A **coronary calcium scan (CAC)** is a quick, non-invasive CT scan of the heart to help assess the degree of calcium deposits, or plaque, in the coronary arteries. Plaque can narrow arteries and increase the risk of heart disease. A CAC is one of the most effective tests in assessing heart attack risk.

This scan is for people at risk for Coronary Artery Disease (see graphic below). Please call your doctor and ask about the coronary calcium scan screening test.

Major Risk Factors for Coronary Artery Disease (CAD)



After a CAC, it is important to continue routine follow-up appointments with your doctor, as this is not a definitive test in predicting your risk for heart attack.

This test is not meant for those already experiencing symptoms of heart disease (chest pain or discomfort, shortness of breath or palpitations).

ECHN[™]
Eastern Connecticut Health Network